

High-Quality Text Placement Solutions Prove Priceless for City of San José Public Safety

CASE STUDY

Products Used:

- > Label-EZ
- > Label-Edit
- > Microstation GIS

Key Benefits:

- > Drastic reduction of labor costs
- > Enormous amount of time saved during the map production process
- > Easy-to-read aesthetic maps help make better decisions
- > Integrated into the City's Intergraph Computer Aided Dispatch System
- > Immediate and high return on investment

Easy-to-read maps are critical for public safety applications

The challenge:

The City of San José, California, implemented a new computer-aided-dispatch (CAD) system in June, 2004. This system uses GIS and GPS to spatially locate emergency events and emergency vehicles, thus making accurate GIS data a necessity.

The GIS street name text layer that was initially used in the CAD was not specifically designed for public safety use. Hence, a new process for creating and maintaining an up-to-date text layer was necessary.

The solution:

MapText, Inc. has well established automated text placement solutions for multiple GIS systems. The company's market-leading product, Label-EZ, was a natural fit for the needs of the City's Public Safety Department.

Regularly updated data from the GIS database is loaded into the CAD database. Then updated text layers are generated by Label-EZ in a very short time. This new workflow ensures that the latest information is available for use in the CAD system.

The results:

The use of Label-EZ resulted in two major benefits:

- Easy-to-read maps are simply critical in public safety. Label-EZ guarantees this by always placing names unambiguously and aesthetically (see Fig. 1 below).
- Emergency crews need to have the latest maps available. Label-EZ's high performance guarantees quick map production for such time-critical applications.

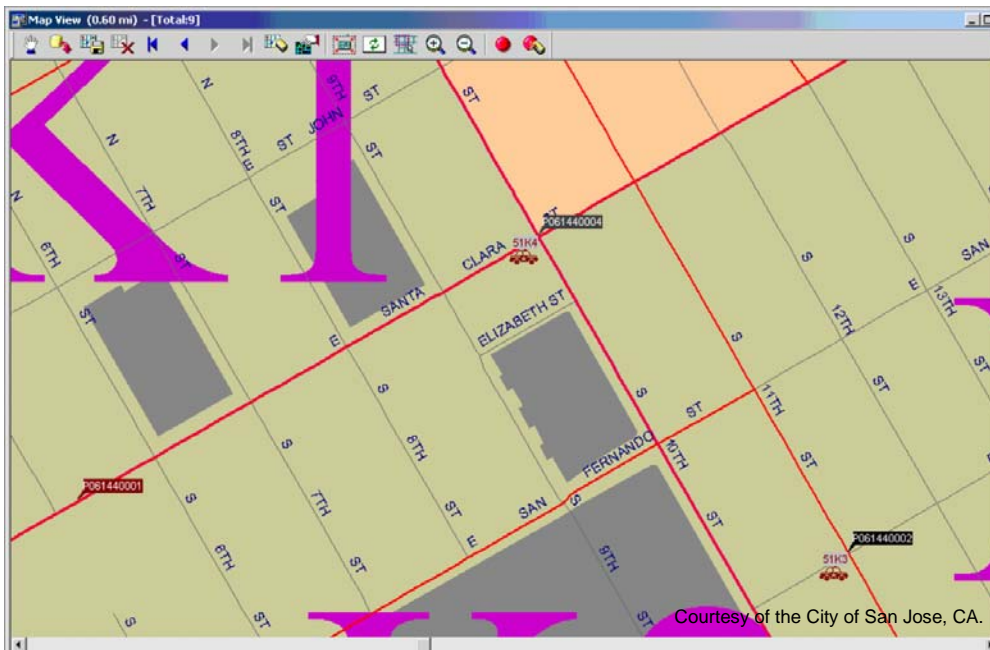
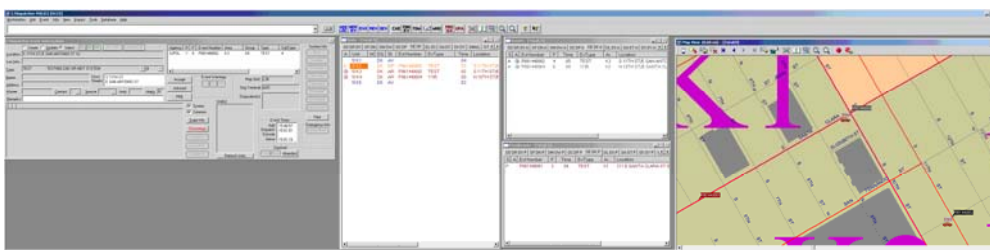


Fig.1: (Top) Emergency map indicates vehicle locations in real time. (Bottom) Control panel for CAD Dispatchers



MapText, Inc.
666 Plainsboro Road, Ste. 1025
Plainsboro, NJ 08536, USA
T. +1 609.716.7552
sales@maptext.com

