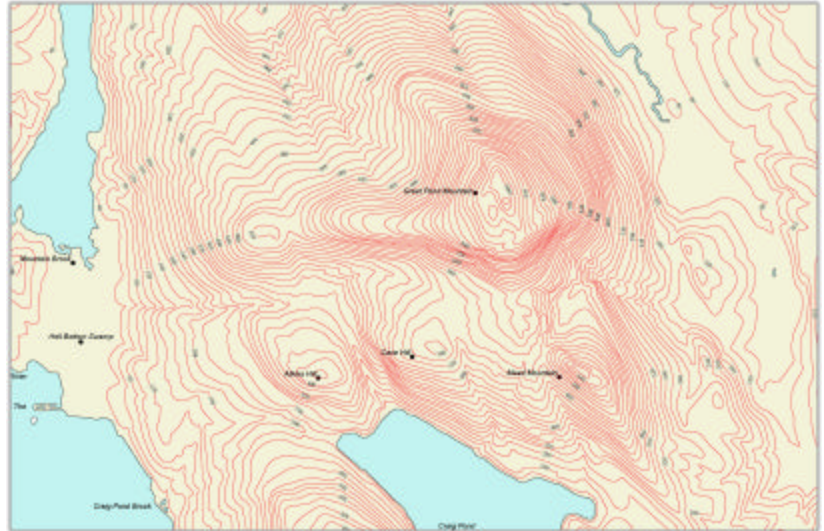


What does *Label-Contour* do?

Label-Contour places elevation (depth) values of contour lines for maps automatically in a coordinated manner and in full conformance with established cartographic conventions and users' preferences. *Label-Contour* is an extension to MapText's flagship *Label-EZ* text placement software.

Fig. 1 – *Label-Contour* allows repeated label placements for long contours as per user specification.



Who can use *Label-Contour*?

- Geological surveys, Earth resources companies
- Military organizations, Nautical chart producers
- Traditional mapmakers, and many more...

Why *Label-Contour*?

The most **valuable benefits** of using *Label-Contour* are:

1. **Uniqueness.** *Label-Contour* is the only software in the market today that places labels on contour maps fully automatically.
2. **Aesthetic and conflict-free label placement.** *Label-Contour* places the elevation values to the highest cartographic quality in a conflict-free and integrated manner.
3. Enormous increase in **productivity.** The software labels complex contour maps in seconds or minutes instead of weeks. The need for manual post-editing is minimal.
4. *Label-Contour* is **highly configurable**; users can control several placement parameters, from multiple placements of labels (Figs. 1 and 2) to reversing of the reading direction, and many more.
5. Works seamlessly with all major GIS systems.

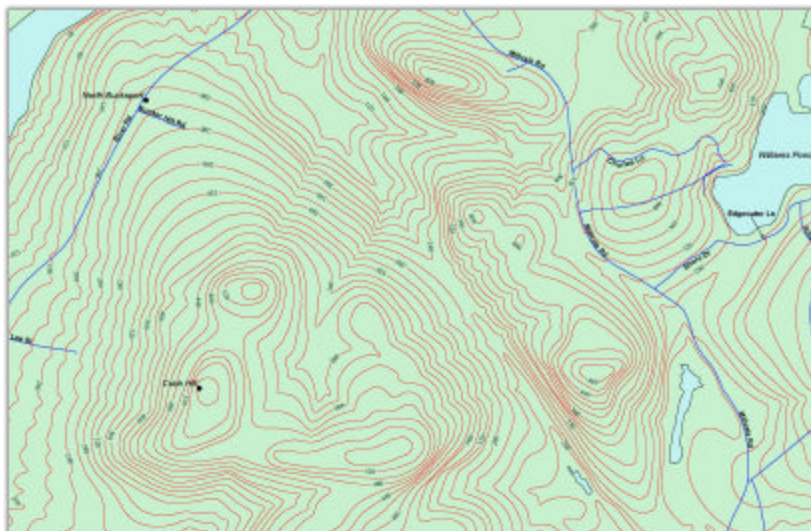


Fig. 2 – *Label-Contour* assures conflict-free label placement across all feature layers.